



THE COMPETENCE TO PERFORM



■ The system in its elements

The panels can be mounted vertically, diagonally or horizontally. If mounted horizontally, the elements can also be delivered with sealed ends.



■ The system as a whole

Sophisticated components for corners complete the system. For example, prefabricated corner components for inner- and outer-corners always offer the best solutions. Optimal for horizontal mounting as the visual effect of non-stop panels is achieved.

■ The system in width & length

Four standard panel widths: 140mm, 190mm, 223mm and 290mm as well as variable lengths: 0.5m - 6.0m ensure secure connections with a variety of design possibilities.



The Dangel Panel System.

Modern ■ Economical ■ Durable ■ True to size ■

- Plumbing
- Sheet metal forming
- Metal roof
- Metal facade

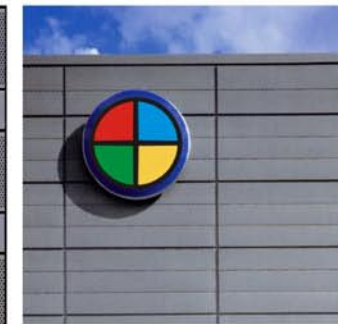
Dangel - a partner for everybody since 1969

- Metal panels
- Interior work made from metal
- Sanitary and housing technology
- Bathrooms and Barrier-free

Design: GS electronic • www.GS-electronic.de • DKC22001_01

The Dangel Panel System.

Modern ■ Economical ■ Durable ■ True to size ■



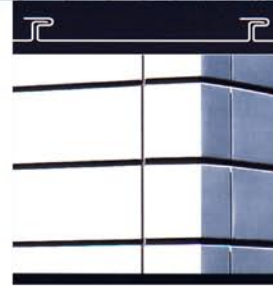
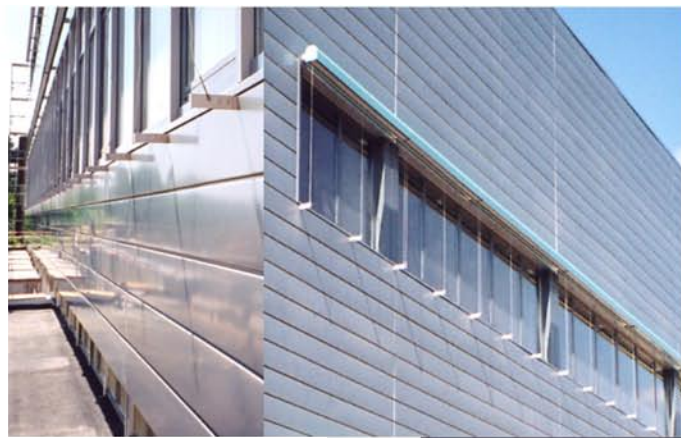
New design variations in architecture



■ Noble panels in shapely and long-lasting materials – that's facade quality with design flexibility in pure form. Ideal for horizontal as well as vertical mounting, on wooden or metal substructures. With a variable seam width of 0-30mm for individual design solutions.

A system which is also especially cost-efficient to mount thanks to its special plug-in seam technique.

Economy couldn't be more attractive.



The Dangel Panel System.

Modern ■ Economical ■ Durable ■ True to size ■



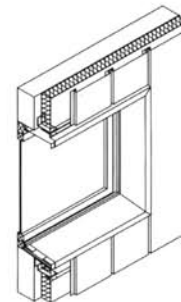
- Non-bearing, rear-ventilated facade system
- No full substructure needed
- Facade covering in outside areas
- Dormers • Gables • Balcony cladding
- Ceilings • Sound insulation • Walls
- Variety of possibilities for inside areas
- Individual design variations
- Set the tone through color composition
- For new buildings and renovations
- Round panels with minimum radius of 2.0 m
- Fast mounting due to prefabricated components

■ Available in these materials:

- Titan zinc, pre-weathered
- Copper
- Coloured aluminum, various colours
- Steel plate, colour-coated
- Perforated steel plate (titan zinc, copper, aluminum)

By request with substructure, joining sheet metal

- 1.0 mm/0.8 mm thick
- 0.7 – 1.0 mm thick
- 0.7 – 1.2 mm thick
- 0.6 – 0.9 mm thick
- 0.7 – 1.0 mm thick



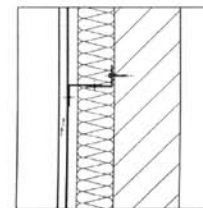
Window enclosure
Vertical panel

■ Substructure made of wood

The centre-distance from bolt to post is aligned according to the load of own-weight and wind-burden and can only be a maximum of 0.6m. A seating of at least 40mm in the mounting area is also needed. A wooden substructure is only recommended for small areas.



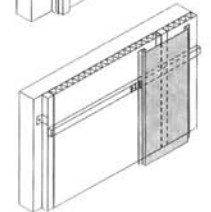
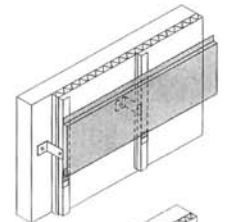
Chimney cladding with various panel widths



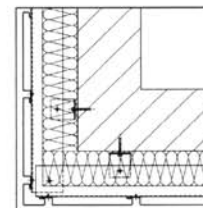
System construction:
Two-piece substructure

■ Substructure made of metal

Screws or rivets on one side of the profile attach the panels to the substructure. For lengths over 1.8m they are fixed directly — in the middle when mounted horizontally and in the upper part of the panel when mounted vertically. By using two or more pieces for the substructures, building tolerances can be equalized without difficulty. In addition, only a few places with temperature exchange are created.



Wood or metal
substructure



Detail:
Outer-corner profile

